



## **USER GUIDE**



## Contents

- Page 3.** EasyGlide<sup>TM</sup> Ramp Operation
- Page 5.** EasyGo<sup>TM</sup> Ramp Operation
- Page 6.** Entry and Front Wheelchair Restraints
- Page 7.** Electric Assist Winch
- Page 8.** Rear Wheelchair Restraints
- Page 9.** Wheelchair Passenger Seat Belt
- Page 10.** Wheelchair Passenger Seat Belt: [Grand] Freedom RS/RX & Freedom RE
- Page 12.** Wheelchair Passenger Seat Belt: Grand Freedom RE
- Page 14.** Getting Ready to Travel & On Arrival
- Page 15.** Rear Folding Seats
- Page 16.** Optional Tip & Turn Seating
- Page 17.** Seat Belts
- Page 18.** Child Restraints
- Page 19.** Fitting Universal Child Restraints
- Page 20.** Fitting ISOFIX Child Restraints
- Page 22.** Puncture Repair System: and Optional Spare Wheel
- Page 23.** Technical Specifications

## IMPORTANT NOTE

This guide describes product features and options available throughout the range of models, some of which may not presently be available in your region. Not all features in this guide will be present on your vehicle and some images could appear different to your vehicle.



fig.1



fig.2



fig.3



fig.4



fig.5

## EasyGlide™ Ramp Operation - Deploy

The EasyGlide™ ramp is a double action ramp. When not in use it can either be stored vertically at the rear of the vehicle or fold flat into the floor to allow easier access to the rear storage space.

### Transfer from flat to vertical position

- A. From the flat position, pull the lever **fig.1** on the right side of the ramp to release the ramp.
- B. Using the handle in the centre of the ramp **fig.2**, lift the ramp up and towards the rear of the vehicle.
- C. Walk the ramp back until the bottom latches engage. The ramp is now secured in the vertical position **fig.3**.

### Deploying the ramp

- D. From the vertical position, pull the lever **fig.4** on the left side of the ramp to release the ramp.
- E. Using the handle in the centre of the ramp **fig.2**, pull the ramp out towards you. The ramp will lower as you draw it out.
- F. Once fully lowered, the ramp is ready to use **fig.5**.

### IMPORTANT NOTE

Please ensure the ramp is fully extended and rests on a stable and level surface when in use. Pay careful attention when boarding and alighting via the ramp if your vehicle is parked on a slope or a steeply cambered road, particularly when facing uphill as this increases the angle of the ramp. While the ramp surface is slip-resistant, extra care should be taken when operating in wet conditions.

When parking, leave enough room at the rear of the vehicle for wheelchair entrance and exit (approx. 3 meters to the nearest obstacle).



fig.1



fig.2



fig.3



fig.4



fig.5

## EasyGlide™ Ramp Operation - Stow

### Stowing the ramp

- A. Using the handle in the centre of the ramp **fig.1**, lift up the ramp and walk it back into its vertical position **fig.2**. To reduce the height of the ramp when travelling, the top section folds down flat against the main part of the ramp **fig.3**.
- B. Latches on either side of the ramp secure it in position. Once latched, pull on the ramp to check that it is secured.

**Note: Ensure the top section of the ramp is folded down before travelling. Otherwise rearward vision will be reduced and damage to the rear window may occur.**

### Transfer from vertical to flat position

**Note: The rear retractors must be removed from the floor before the ramp can be stowed in the flat position. DO NOT attempt to stow the ramp in the flat position when there is a wheelchair present in the vehicle.**

- C. To stow in the flat position, pull the lever **fig.4** on the right side of the ramp to release the ramp. The ramp will fall partially into the vehicle **fig.5**.
- D. With your hands placed below and clear of the gap in the ramp surface, push the ramp into the floor **fig.6**. If the ramp does not stand back up it has been securely latched in this position.



fig.6



fig.1



fig.2



fig.3



fig.4



fig.5

## EasyGo™ Ramp Operation

The EasyGo™ ramp is a single action ramp. When not in use it is stored vertically at the rear of the vehicle.

### Deploying the ramp

- A. To release the ramp pull the lever on the underside of the main ramp body **fig.1**.
- B. Using the handle in the centre of the ramp **fig.2**, pull the ramp out towards you. The ramp will lower as you draw it out. Once fully lowered, the ramp is ready to use **fig.3**.

### Stowing the ramp

- A. Using the handle in the centre of the ramp **fig.2**, lift up the ramp and walk it back into its upright position **fig.4**. To reduce the height of the ramp when travelling, the top section folds down flat against the main part of the ramp **fig.5**.
- B. Latches on either side of the ramp secure it in position. Once latched, pull on the ramp to check that it is secured.

### IMPORTANT NOTE

Ensure the top section of the ramp is folded down before travelling. Otherwise rearward vision will be reduced and damage to the rear window may occur.

Please ensure the ramp is fully extended and rests on a stable and level surface when in use. Pay careful attention when boarding and alighting via the ramp if your vehicle is parked on a slope or a steeply cambered road, particularly when facing uphill, as this increases the angle of the ramp. While the ramp surface is slip-resistant, extra care should be taken when operating in wet conditions.

When parking, leave enough room at the rear of the vehicle for wheelchair entrance and exit (approx. 3 metres to the nearest obstacle).



fig.1



fig.2



fig.3



fig.4




fig.5

## Entry and Front Wheelchair Restraints

- A. Open the tailgate fully and deploy the ramp.
- B. Remove the rear wheelchair restraints from the floor anchors by lifting the toggle while sliding the restraints off the anchors (fig.1). Set the restraints aside for later.
- C. Position the wheelchair user at the bottom of the ramp. Now press the wheelchair restraint lock/release switch situated at the rear of the vehicle (fig.2).
- D. The front wheelchair restraints are located under the rear bench seats (RS/RX) or under the front seats (RE). With the wheelchair positioned at the bottom of the ramp, pull the restraints down the full length of the ramp (fig.3) and attach them to either side of the front of the wheelchair frame (fig.4).

### IMPORTANT NOTE

Don't attach the restraint hooks to the wheels or any plastic or removable parts of your wheelchair. Some wheelchairs have a designated attachment point which will be marked with a  (illustrated in fig.4). In this case these points must be used when securing the wheelchair.

- E. Push the wheelchair passenger inside the vehicle (fig.5) using the winch for assistance if fitted (see page 7).
- F. Once the wheelchair passenger is in place press the wheelchair restraint lock/release switch again (fig.2). The light on the switch will now turn off indicating that the restraint system is locked, so that it can retract but cannot be extended. Take up any additional slack in the straps by rolling the wheelchair backward and forward as necessary. The straps will secure the front of the wheelchair throughout the journey.

<sup>1</sup> Depending on preference, your vehicle may be fitted with J hooks (as shown in this guide) or webbing straps with tongue and buckle connectors.





fig.1



fig.2



fig.3



fig.4



fig.5

## Electric Assist Winch

**Note:** The Electric winch system is designed to assist in pulling a wheelchair passenger up the ramp. If your vehicle has a winch included, it should be operated in addition to the wheelchair restraint system as follows:

- A. Position the wheelchair user at the bottom of the ramp and attach the front restraints as instructed on page 6, steps C & D.
- B. The control for the winch is located at the rear of the vehicle **fig.1**. Holding the winch bar **fig.2** guide the strap down the ramp using the arrow button on the remote control until the winch bar is at the bottom of the ramp, ready to attach to the wheelchair frame.
- C. Attach to secure points on the front frame of the wheelchair using the clips **fig.3**. Many people prefer this to be attached beneath the foot rests, although this may not always be possible with all designs of wheelchair.

**Note:** The winch line should remain taut at all times to avoid snagging.

- D. Stay behind the wheelchair holding the handles as the wheelchair ascends the ramp **fig.4**. The arrow buttons can be used to adjust the positioning of the wheelchair inside the vehicle as required. Once inside, lock the front restraints as detailed on page 6 step F to prevent the wheelchair from rolling back. Detach the winch bar and place the remote control back in its holder **fig.5**. You are now ready to attach the rear restraints as detailed on page 8.

## IMPORTANT NOTE

For safe use of the electric winch, please also refer to the relevant ramp operation instructions on page 3 or 5. The safe working load of the electric winch will be reduced when your car is parked facing uphill on an incline or if your car is parked in any other condition which has increased the ramp angle.

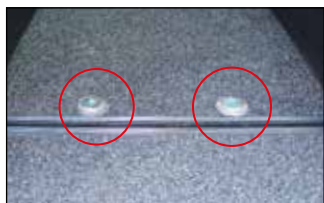


fig.1



fig.2



fig.3



fig.4




fig.5

## Rear Wheelchair Restraints

- A.** Retrieve the rear wheelchair restraints. The restraints attach to the anchors at the rear of the vehicle (fig.1). To attach the restraints, lift the toggle then slide them onto the anchors on the floor (fig.2). Check the restraints are secure by trying to slide them off without lifting the toggle. The restraints are now fixed to the vehicle floor, ready for use.
- B.** Now attach both rear restraint hooks to the rear frame of the wheelchair. To extend the restraints push down on the red lever and pull the strap to the required length (fig.3). Ensure that the restraints are fixed at approximately 45 degrees.

### IMPORTANT NOTE

Don't attach the restraint hooks to the wheels or any plastic or removable parts of your wheelchair. Some wheelchairs have a designated attachment point which will be marked with a . In this case these points must be used when securing the wheelchair.

- C.** To secure the restraints, locate the adjusters found on the side of each restraint and turn until the straps become taut (fig.4).
- D.** The rear of the wheelchair is secure when both wheelchair restraints have been attached and tightened (fig.5). You should now apply the wheelchair brake.

<sup>1</sup> Depending on preference, your vehicle may be fitted with J hooks (as shown in this guide) or webbing straps with tongue and buckle connector.





fig.1



fig.2



fig.3

## Wheelchair Passenger Seat Belt

**Note: Your vehicle is fitted with one of two possible wheelchair passenger seat belts. Please ensure you follow the correct fitting instructions for the wheelchair passenger seat belt fitted to your vehicle.**

You can identify which wheelchair passenger seat belt is fitted to your vehicle by following the steps below:

- A.** Locate the seat belt hanging from the roof of the vehicle **fig.1**. It will be positioned behind the wheelchair passenger and may be fitted on the right or the left.
- B.** If your wheelchair passenger seat belt is fitted with multiple tongues like those in **fig.2** please follow the instructions for Wheelchair Passenger Seat Belt: [Grand] Freedom RS/RX & Freedom RE on page 10 & 11.
- C.** If instead your wheelchair passenger seat belt is fitted with a single tongue like the one in **fig.3** please follow the instructions for Wheelchair Passenger Seat Belt: Grand Freedom RE on page 12 & 13.

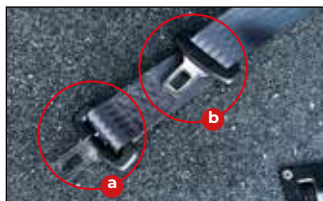


fig.1

## Wheelchair Passenger Seat Belt: [Grand] Freedom RS/RX & Freedom RE

**A.** Locate the tongue that is fixed at the very end of the belt **fig.1a** and secure this in the buckle nearest to the seat belt reel box **fig.2**. You will hear a click once the tongue has been properly inserted.

**B.** Pull the seat belt across the passenger's chest and secure the other tongue **fig.1b** in the buckle farthest from the seat belt reel box **fig.3**. You will hear a click once the tongue has been properly inserted.

**Note:** The seat belt should be flush against the passenger's body and not caught on the arms, wheels or any other part of the wheelchair. For example, the belt should be routed under the armrests or through the chair back, if there is a gap to do so **fig.4**.



fig.2



fig.3

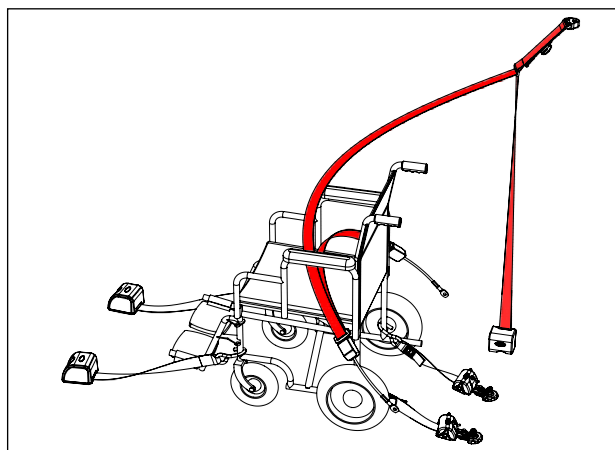


fig.4



fig.5

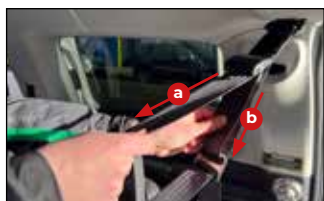


fig.6



fig.7

## Wheelchair Passenger Seat Belt: [Grand] Freedom RS/RX & Freedom RE

- C. The seat belt should rest on the passenger's shoulder without rubbing against their neck **fig.5**. If necessary, the shoulder belt height can be raised **fig.6a** or lowered **fig.6b** by feeding the belt through the adjuster.
- D. The lap belt should sit low, around the passengers hips **fig.5** to provide the greatest comfort and securement.

### IMPORTANT NOTES

The shoulder belt must not drop below the height of the passenger's shoulder **fig.7**.

The belt should not twist as it crosses the passenger's body. Remove twists by releasing the tongues from the buckles and twisting the belt in the opposite direction.

**PROCEED TO PAGE 14**



fig.1



fig.2

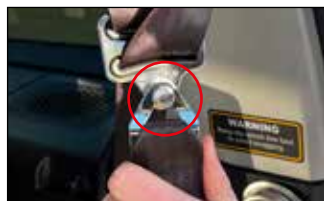


fig.3

## Wheelchair Passenger Seat Belt: Grand Freedom RE

- A. Retrieve the buckle belt from the vehicle glove box **fig.1**.
- B. Attach the connector **fig.1a** to the pin on the rear wheelchair restraint farthest from the seat belt reel box **fig.2 fig.4a**.
- C. Place the buckle **fig.1b** on the passenger's lap while you prepare the rest of the belt.
- D. Locate the seat belt hanging from the roof of the vehicle and unhook the belt connector from the storage pin **fig.3**.
- E. Attach the connector to the pin on the rear wheelchair restraint nearest to the seat belt reel box **fig.2 fig.4b**.
- F. Pull the seat belt across the passenger's chest and secure the belt tongue in the buckle **fig.5**. You will hear a click once the tongue has been properly inserted.

**Note:** The seat belt should be flush against the passenger's body and not caught on the arms, wheels or any other part of the wheelchair. For example, the belt should be routed under the armrests or through the chair back, if there is a gap to do so **fig.4**.

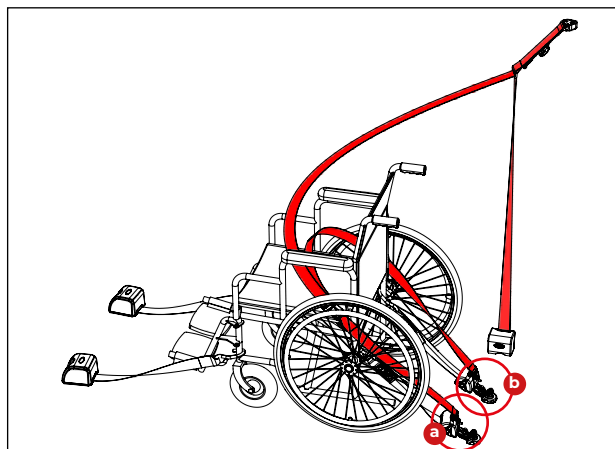


fig.4



fig.5



fig.6

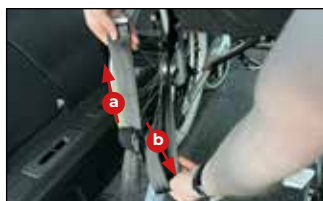


fig.7



fig.8

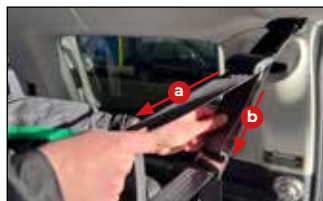


fig.9



fig.10

## Wheelchair Passenger Seat Belt: Grand Freedom RE

- G. The buckle should lie as close as practical to the wheelchair passenger's hip while still retaining access to the buckle release button **fig.6**. If necessary, the buckle belt can be shortened **fig.7a** or lengthened **fig.7b** by feeding the belt through the adjuster.
- H. The seat belt should rest on the passenger's shoulder without rubbing against their neck **fig.8**. If necessary, the shoulder belt height can be raised **fig.9a** or lowered **fig.9b** by feeding the belt through the adjuster.
- I. The lap belt should sit low, around the passengers hips **fig.8** to provide the greatest comfort and securement.

### IMPORTANT NOTES

The shoulder belt must not drop below the height of the passenger's shoulder **fig.10**.

The belt should not twist as it crosses the passenger's body. Remove twists by detaching the belts from the rear retractors and twisting the belt in the opposite direction.

Always secure the connector to the wheelchair restraint by sliding the connector under and up the pin on the wheelchair restraint **fig.11**. Do not use with the connectors upside down.

### PROCEED TO PAGE 14

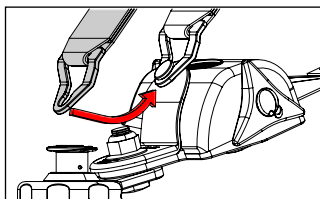


fig.11





fig.1



fig.2



fig.3



fig.4

## Getting Ready to Travel

**With the wheelchair restraints and wheelchair passenger seat belt firmly secured, you're almost ready to go.**

- A. Stow the ramp following the relevant instructions on page 4 or 5.
- B. Finally, pull down the tailgate using the pull strap **fig.1** while keeping your head clear and ensure it engages in the lock.

**Now you're ready to go.**

## On Arrival

- A. When you arrive at your destination open the tailgate and deploy your ramp following the relevant instructions on page 3 or 5.
- B. Unfasten the wheelchair passenger seat belt and press the wheelchair restraint switch **fig.2** (the red light will come on).
- C. Detach the rear restraint hooks<sup>1</sup> from the wheelchair frame by holding down the red lever and removing the hooks from the attachment points **fig.3**. Then remove the rear restraints from the vehicle floor by lifting the toggle and sliding them from the anchors **fig.4**. Remove the wheelchair brake.
- D. Guide the wheelchair passenger down the ramp with the front restraints still attached. Once clear of the vehicle, detach the front restraints and hold them as you walk in, allowing them to retract.
- E. Turn the restraint switch back off. It's important that you remember to do this or you may drain the battery while the vehicle is not in use.
- F. Finally, store the rear restraints by reattaching them to the floor anchors.

**Note: Retractors will have to be removed from the floor to fold the EasyGlide ramp into its flat position.**

<sup>1</sup> Depending on preference, your vehicle may be fitted with J hooks (as shown in this guide), on webbing straps with tongue and buckle connectors.



fig.1



fig.2



fig.3



fig.4



fig.5



fig.6



fig.7

## Rear Folding Seats

The rear triple bench seats in the Ford Freedom can be folded forward to create additional space if required. Ensure the front seats are far enough forward to allow the rear seats to fold into the stowed position. The front seats can be moved back once the fold is completed.

The following photographs show the double seat being folded but the folding mechanism is the same for the single rear seat as well.

- A. Pull the black seat release tag located at the bottom of the seat (fig.1) then tip the back of the seat forward as shown (fig.2).
- B. Locate the red seat release tag on the rear of the seat (fig.3). Pull the tag upwards, which will allow you to lift up the seats and fold them forward (fig.4).
- C. Secure the seat for travelling by unclipping the support leg on the underside of the seat (fig.5) and attach the red hook to the bar on the seat base (fig.6 & fig.7).
- D. Repeat steps A, B & C for any other rear seats which you would like to fold forward.

## IMPORTANT NOTE

Folding or unfolding the seats must only be done when the vehicle is stationary.

Ensure the seats are fully secured in the forward position. A seat that is not correctly stowed compromises the safety of passengers in the event of sudden braking.



fig.1



fig.2



fig.3



fig.4



fig.5

## Optional Tip & Turn Seating

Optional tip and turn seats may be fitted in the back of your vehicle allowing you to travel with additional rear passengers **fig.1**. The seats can swing around to the front facing position when required and are stored flat against the vehicle sides when wheelchair access is required.

- A. To move the seats into position for travel, pull out on the red handle in the upper corner of the seat **fig.2**. This will unlock the seat and allow rotation **fig.3** until it clicks it into place.
- B. Now pull down on the base of the seat to lower it into place **fig.4**. The tip and turn seat is now ready to use **fig.5**.
- C. The Tip & Turn seats have been provided with integral seatbelts. Locate the tongue of the belt on the outboard side of the seat **fig.6** and pull it in front of you with a smooth movement, checking that it does not twist, and insert it into the buckle on the inboard side of the seat **fig.7**.
- D. You will hear a click once the tongue has been properly inserted. To check that the seat belt is fastened correctly, pull on the strap and check that the tongue has remained engaged in the buckle.
- E. To unlock your seatbelt press the red button on the buckle. Guide the seatbelt as it is reeled in.



fig.6

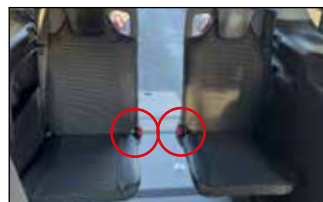


fig.7

## Seat Belts

### **Seating modifications/additions as part of the conversion**

Your vehicle may have been supplied with either triple bench seats (RS/RX) or single seats (RE) in row 2 depending on the vehicle model. Specialist Tip & Turn seats may also have been added in the third row depending on the specifications of your vehicle (see page 16).

The seats in the second row of your vehicle have been tested to the same standards as the base vehicle and meet the requirements for seat strength, safety-belts, and their anchorages.

### **Adult Occupant Seat Belts**

In order to be effective, a seat belt must:

- Have the lap part of the belt positioned as low as possible on the pelvis
- Have the shoulder part of the belt positioned in the hollow of the shoulder
- Be tightened as close to the body as possible
- Be used to restrain only one person, regardless of age
- Not show any signs of cuts or fraying
- Not be altered or modified in any way since any changes may render the belt ineffective

The driver must ensure that passengers use the seat belts correctly and that they are all fastened before setting off. Wherever you are seated in the vehicle, always fasten your seat belt, even for short journeys. Seat belts are designed to retain occupants in their seats, and so prevent or reduce injuries in a crash.

Should one of your seat belts be cut, show signs of severe fraying or be involved in a severe incident, it should be replaced immediately by a qualified workshop with the skills and equipment needed to perform the task.

The seats in the second row of your vehicle are equipped with the original Ford seat belt apparatus. Should you require any instruction on the operation or maintenance of the seat belts, please refer to the base vehicle handbook.

The straps of the integrated seat belts fitted to the Tip & Turn seats can be cleaned with soapy water. Allow the belt to dry before retracting back into the seat.

## Child Restraints

Always comply with local or national regulations. In some countries, the use of child restraint systems is forbidden on certain seats.

In accordance with European regulations, all children under the age of 12 or less than 150cm tall must travel in approved child seats suited to their weight, on seats fitted with a seat belt or ISOFIX anchors. Children weighing less than 9kg must travel facing rearwards, but it is recommended that children should travel facing rearwards in the vehicle as long as possible.

**NOTE: Do not hold a child on your lap while the vehicle is moving.**

Only child restraints certified to ECE-R129 or ECE-R44.03 (or later) have been tested and approved for use in your vehicle.

The row 2 seats are the most convenient location to fasten a child restraint system. If the child restraint is installed in row 3 it will have to be removed to allow the wheelchair user access through the rear of the vehicle.

### IMPORTANT NOTE

This user guide contains conversion specific child restraint fitting advice. Consult your base vehicle handbook for additional information on the safe use of child restraints.

Child restraint systems advertised as recommended for your vehicle may no longer be suitable due to the modifications to the vehicle. If in doubt about the suitability of a child restraint system seek professional guidance.

Do not modify child restraints in any way. Do not stick anything on the child restraint systems and do not cover them with any other materials.



Fitting Universal Child Restraints

When fitting a child restraint secured by the adult occupant seat belts ensure that the seat belt is correctly positioned around the child restraint in line with the instructions provided by the child restraint manufacturer. The child restraint should be held firmly on the vehicles seat by the belt, ideally in contact with the seat backrest. It should not touch the headrest. If necessary, move the seat in front of a child restraint forwards so that the legs of the child in a “forwards facing” child restraint or the “rearwards facing” child restraint itself do not touch the seat in front.

Remember to fasten the seat belts or the harness of the child restraint, keeping the slack relative to the child’s body to a minimum, even for short journeys.

IMPORTANT NOTE

Ensure that there is no seat belt or seat belt buckle under the child restraint causing it to be unstable.

	Child weight and age guide			
	<b>Groups 0 &amp; 0+</b> Under 13kg Up to about 1 year old	<b>Groups 1</b> From 9 to 18 kg From about 1 to 3 years old	<b>Groups 2</b> From 15 to 25 kg From about 3 to 6 years old	<b>Groups 3</b> From 22 to 36 kg From about 6 to 12 years old
Type of seat	Rearward-facing child seat	Rearward/Forward-facing child seat*		Forward-facing booster cushion
Row 1	Consult your base vehicle handbook			
Row 2	Suitable for universal category child restraints approved for use in this mass group			
Row 3				

\*It’s recommended that a child should travel facing rearwards for as long as possible.



fig.1



fig.2



fig.3



fig.4

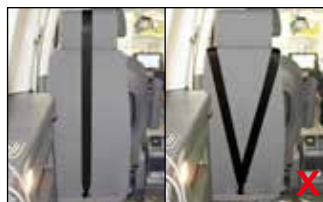


fig.5

## Fitting ISOFIX Child Restraints

The ISOFIX restraint system provides fast, reliable and safe fitting of child restraints. Instructions for fitting i-Size child restraints to the triple bench seats (RS/RX) can be found in your Ford handbook.

The single seats (RE) in the second row of your vehicle are fitted with ISOFIX anchor points that accommodate ISOFIX child restraints. Each seat has 3 anchor points:

- Two front rings located where the seat backrest and cushion meet **fig.1**.
- A rear ring located at the bottom of the rear surface of the seat backrest **fig.2**.

### To fit an ISOFIX child restraint:

- Place the child restraint on the seat and align the two rigid arms on the restraint with the two front rings on the seat.
- Firmly push the base of the child restraint towards the seat backrest until the latches in the attachment arms indicate that they are engaged on the rings.

### For child restraints with a top tether strap:

- Pass the top tether strap between the seat backrest and the head restraint as pictured in either **fig.3** or **fig.4**. **DO NOT** pass the strap over the top of or to either side of the head restraint **fig.5**.
- Attach the hook to the rear ring on the seat **fig.2**. Ensure the strap is not twisted and then tighten using the top tether tensioner on your child restraint until it indicates that the strap is suitably tight.

You may need to twist the hook as it passes under the head restraint to prevent it from becoming stuck.

### For child restraints with a support leg:

- Extend the support leg so that it makes firm and steady contact with the floor. An indicator on the support leg should show when firm contact has been achieved.

## Fitting ISOFIX Child Restraints

### IMPORTANT NOTE

Strictly follow the fitting instructions provided with the child restraint and familiarise yourself with the location of the latch, top tether, and support leg indicators. Incorrect installation of a child restraint compromises the protection of the occupant during a crash.

The head restraints are not removable or adjustable. Before travelling ensure the head restraint is not causing any residual slack to be left in the strap.

When purchasing an ISOFIX child restraint make sure that you know the correct mass group and ISOFIX size class for the intended seating locations. Check the head restraint does not interfere with the child restraint or its top tether tensioner.

	Child weight and age guide								
	Groups 0 & 0+ Under 13kg Up to about 1 year old				Group 1 From 9 to 18 kg From about 1 to 3 years old				
Type of seat	Cot	Rearward-facing child seat			Rearward/Forward-facing child seat*				
ISOFIX Size Class	F, G	E	D	C	D	C	B1	B	A
Row 1	Consult your base vehicle handbook								
Row 2 Bench (RS/RX)									
Row 2 Single (RE)	X	IL		X	IL	X	IL/IUF		
Row 3	No ISOFIX								

\*It's recommended that a child should travel facing rearwards for as long as possible.

In order to accommodate an ISOFIX child restraint the seat in front of the restraint may need to be adjusted forward and have its backrest placed in an upright position.

### Key:

**X** – Not suitable

**IL** – Suitable for use with ISOFIX child restraint systems in the semi-universal category, which may be either:

- Rear-facing, fitted with a top tether strap or a support leg
- Forward-facing fitted with a support leg

**IUF** – Suitable for use with forward-facing ISOFIX child restraint systems in the universal category secured using a top tether strap

**A** – Full size, front-facing child seat

**B** – Reduced size (alt. 1), front-facing child seat

**B1** – Reduced size (alt. 2), front-facing child seat

**C** – Full size, rear-facing child seat

**D** – Reduced size, rear-facing child seat

**E** – Rear-facing infant seat

**F** – Left-hand lateral facing cot

**G** – Right-hand lateral facing cot



fig.1

**INFLATE TO  
60 PSI  
(420 KPA)**

## **Puncture Repair System: Tyre Inflator and Sealant**

Should you experience a flat tyre, a can of tyre inflator and sealant is provided. This is located behind the rear right storage panel located next to the tailgate.

Use according to manufacturer's instructions that are detailed on the can.

## **Optional Space-Saver Spare Wheel**

**The Freedom™ may be fitted with a space-saver spare wheel. Please note the following when in use.**

The space-saver wheel is only for use as a temporary spare and has been designed to enable the vehicle to be driven to a place of repair. It can be used on either the front or rear axle.

When the space-saver has been fitted, the vehicle should be driven with caution and at NO MORE THAN 50 mph (80 km/h).

The vehicle should not be driven with more than one temporary space-saver fitted **fig.1**.

## Allied Mobility Freedom

WAV type: AWAV  
PAS 2012-1:2019 Compliant: Yes  
Base vehicle: Ford Tourneo Connect

Model	Freedom RE	Grand Freedom RS	Grand Freedom RE
<b>Wheelchair Access Entrance Dimensions</b>			
Width (mm)	805	775	790
Height (mm)	1370	1372	1367
<b>Designated Travelling Position</b>			
Width (mm)	582	790	610
Length (mm)	1196	1115	1160
Wheelchair space gradient (°)	0	4.2	0.8
Maximum seated eye-line height (mm)	1154	1257	1145
Internal roof height (mm)	1392	1400	1381
Maximum wheelchair mass (kg)	200	200	200
<b>Maximum Access Dimensions</b>			
Width (mm)	582	775	610
Length (mm)	1196	1115	1160
Height (mm)	1370	1372	1367

Model	Freedom RE	Grand Freedom RS	Grand Freedom RE
<b>Maximum Seating Capacity</b>			
Maximum number of designated wheelchair travelling positions	1	1	1
Maximum number of other passenger seating positions (including driver)	4	5	4
Maximum number of ISOFIX positions	2	2	2
Up-front wheelchair position available	N	N	N
Limitations on seating capacity when carrying an occupied wheelchair	N/A	N/A	N/A
<b>Other</b>			
Fuel tank capacity (litres)	45	50	45
Ground clearance (mm)	147	170	155
Type of spare wheel or puncture repair system fitted	Puncture repair kit (standard) Spare wheel (optional)		
Towing eye location	Rear Right Storage Panel		

Ramp	EasyGo (Grand Freedom RS Only)	EasyGlide	
		Freedom	Grand Freedom
Width (mm)	780	756	
Length (mm)	1450	1580	
Angle when deployed onto road (°)	12.0	10.7	11.4
Position	Rear	Rear	
Safe working load (kg)	400	400	
Attachment method	Permanent	Permanent	
Maximum ramp projection when deployed (mm)	1170	1315	1330

Ford Freedom					
Please find below information on Fuses, Relays, switches & other components which have been added or modified during the conversion process					
Fuse	System	Rating	Location		
			Freedom RE	Grand Freedom RS	Grand Freedom RE
1	Winch	25A	Under bonnet		
2	Electric Restraints	5A			
Relay					
1	Winch	30/40A	Behind rear right side panel		
Switch					
1	Electric Restraints	1kV:3A	Rear right side panel		
2	Safety Interlock (Tilt switch)	300mA	Within tailgate		
Other					
1	Winch	25A	Behind centre console	Behind bench seats, under floor	Behind centre console
2	Left Electric Restraint	200mA	Behind front seats, on floor	Behind bench seats, on floor	Behind front seats, on floor
3	Right Electric Restraint	200mA		Behind bench seats, on floor	Behind front seats, on floor

## Conversion Warranty

The Conversion Warranty covers parts adapted by Allied Mobility for three years / 36,000 miles (whichever comes sooner). When leased via the Motability Scheme the Conversion Warranty covers parts adapted by Allied Mobility for three years with unlimited mileage.

Should you need to source replacement parts for your vehicle that relate to the wheelchair accessible conversion please contact Allied Mobility.

FREEPOST ALLIED MOBILITY

Registered address: 230 Balmore Road, Glasgow, G22 6LJ

FREEPHONE: 0800 587 9656

For international enquiries telephone: +44 (0) 141 336 1556

Email: info@alliedmobility.com

## Note:



It is recommended that any passenger travelling in their wheelchair should be seated in a wheelchair meeting the requirements of ISO 7176-19:2008 or later. The presence of the hook symbol at the tie-down attachment points is generally an indicator that your wheelchair has been designed in line with these requirements. However, if in doubt, please consult the literature that accompanied your wheelchair or speak to your wheelchair manufacturer.